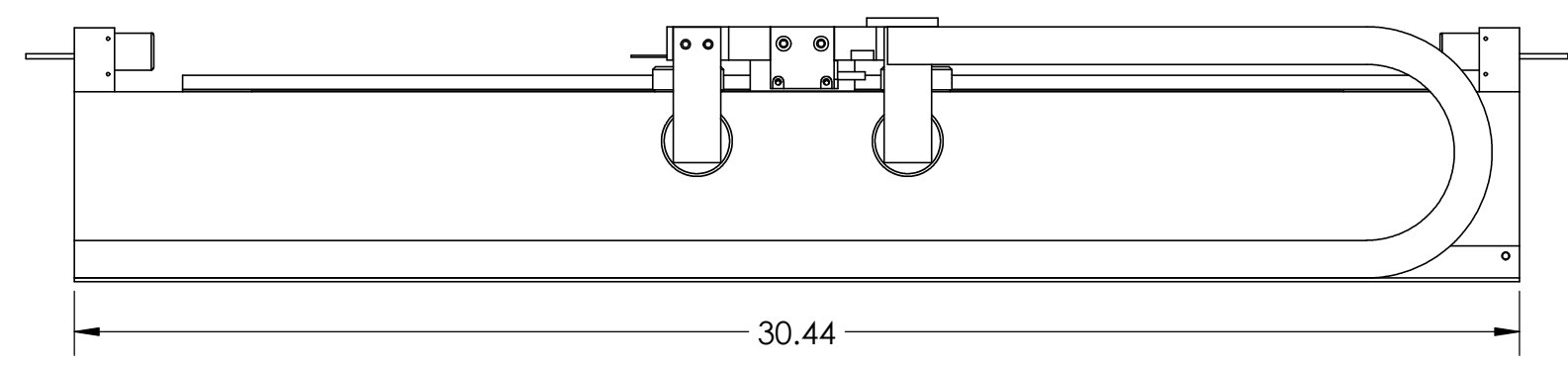
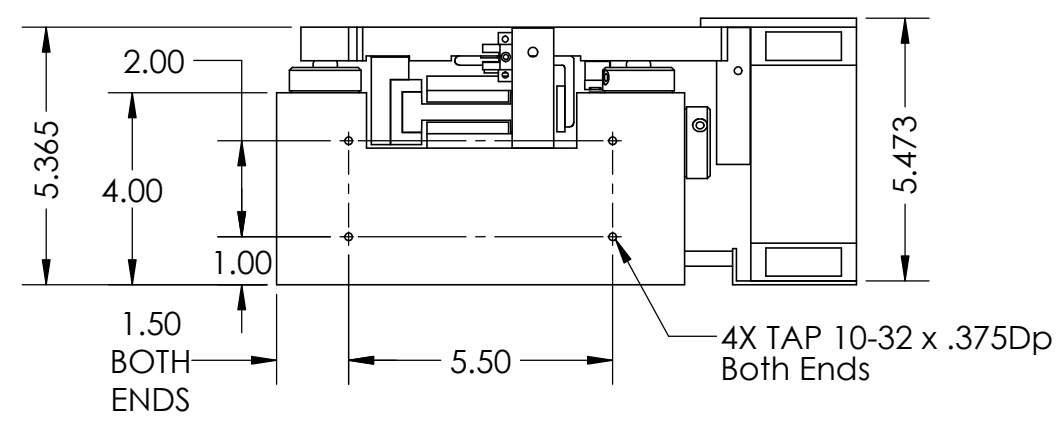
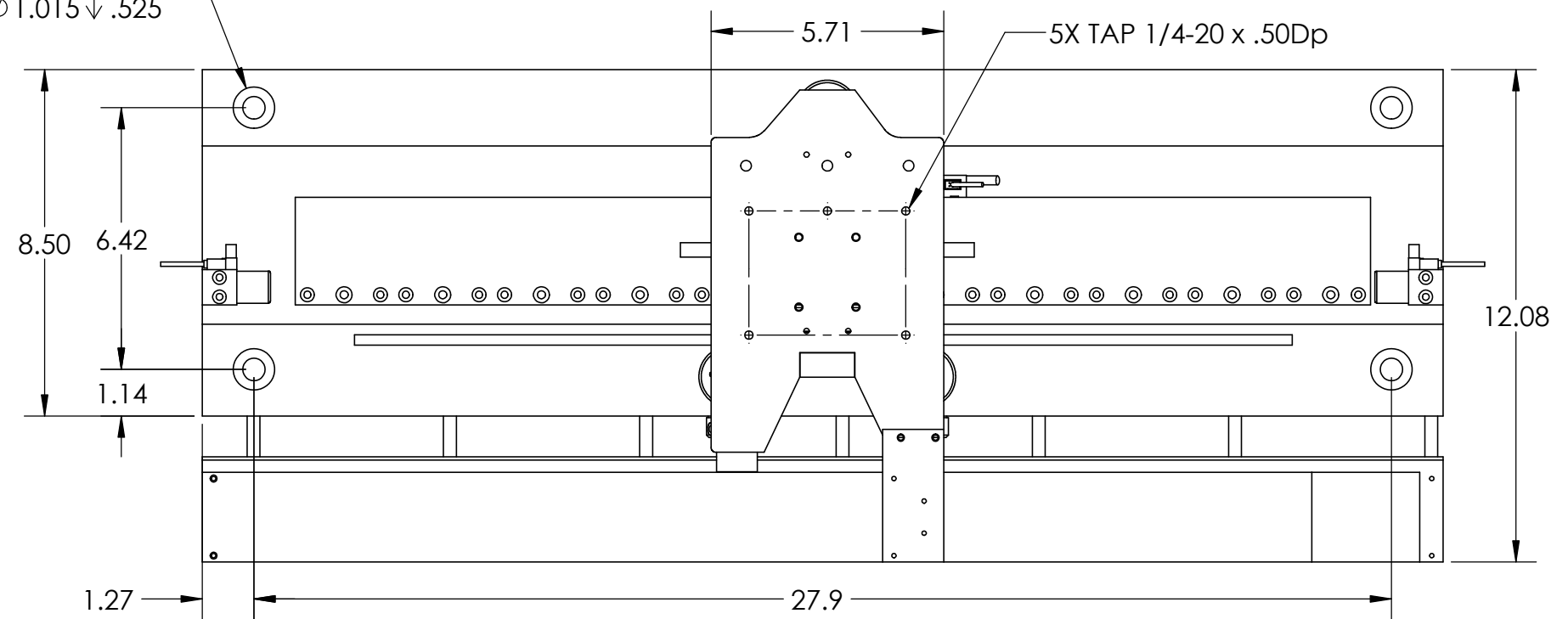
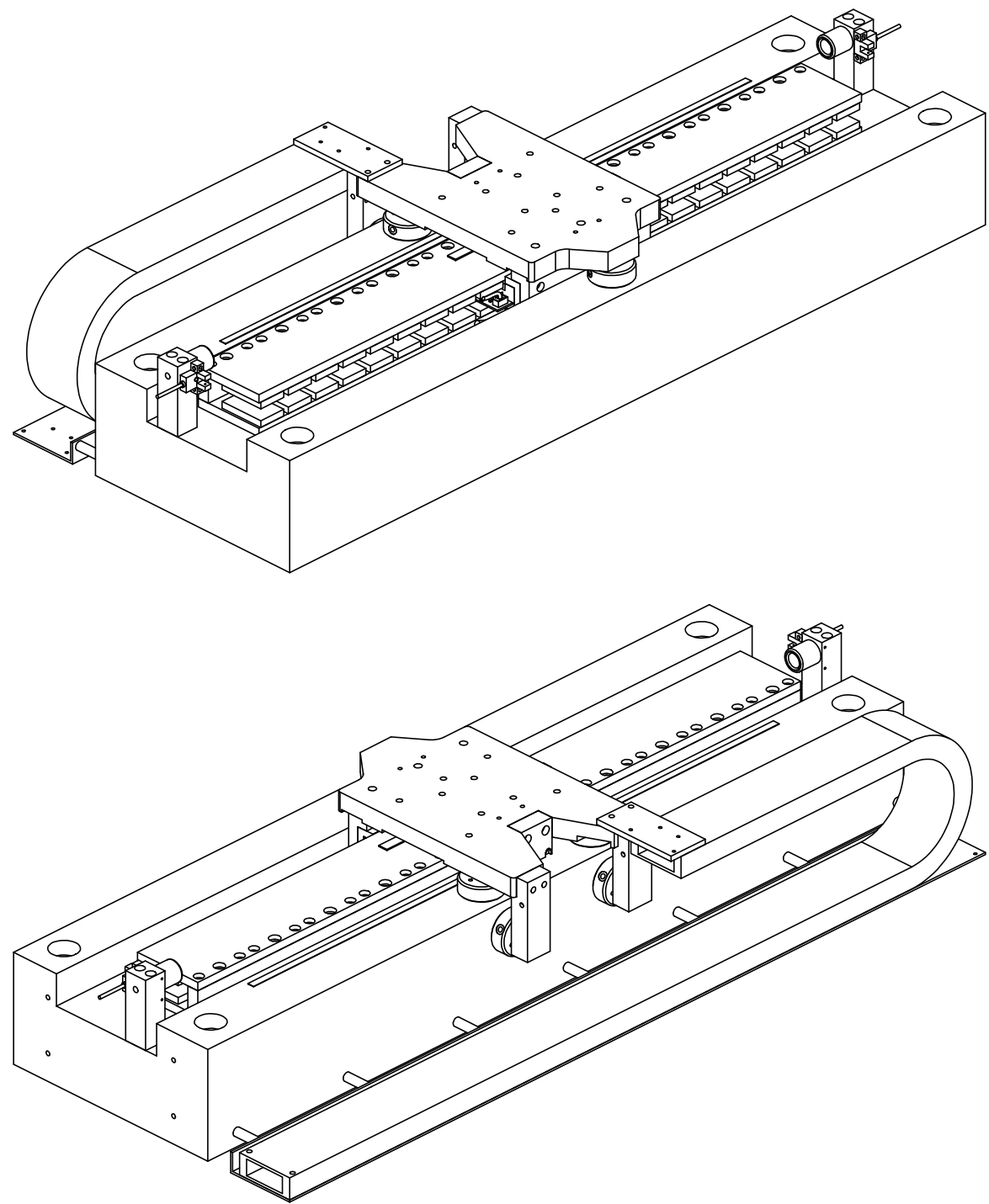


REVISION TABLE					
REV	ECN#	DESCRIPTION	REV BY	APPROVED	DATE
---	---	Original Drawing	OOG	MPW	5-1-18

4X ϕ .550 THRU
 \square ϕ 1.015 ∇ .525





AIR BEARING POSITIONING STAGE SPECIFICATIONS		
Motor P/N	BLDM-D04	
Stroke	21.3 in	541 mm
Encoder Resolution	1 micron	
Bearing Type	Air	
Moving Mass	12 lbs	5.4 kg
Total Mass	105 lbs	47.6 kg
Resistance @ 20C	18.2 ohms	
Inductance @ 20C	24.2 mH	
Electrical Time Constant	1.3 msec	
Motor Constant	2.6 LBS/SQRT(Watt)	11.6 N/SQRT(Watt)
Force Constant	11.2 LBS/Amp	49.6 N/Amp
Back EMF	1.3 V/ips	49.6 V/m/sec
Force @ 100% Duty	16.5 lbs	73.6 N
Power @ 100% Duty	51.8 watts	
Current @ 100% Duty	1.5 amps	
Force @ 10% Duty	49 lbs	220 N
Power @ 10% Duty	466 watts	
Current @ 10% Duty	4.4 amps	
Stage Length	30.44 in	773 mm
Stage Width	12.0 in	305 mm
Stage Height	5.50 in	140 mm